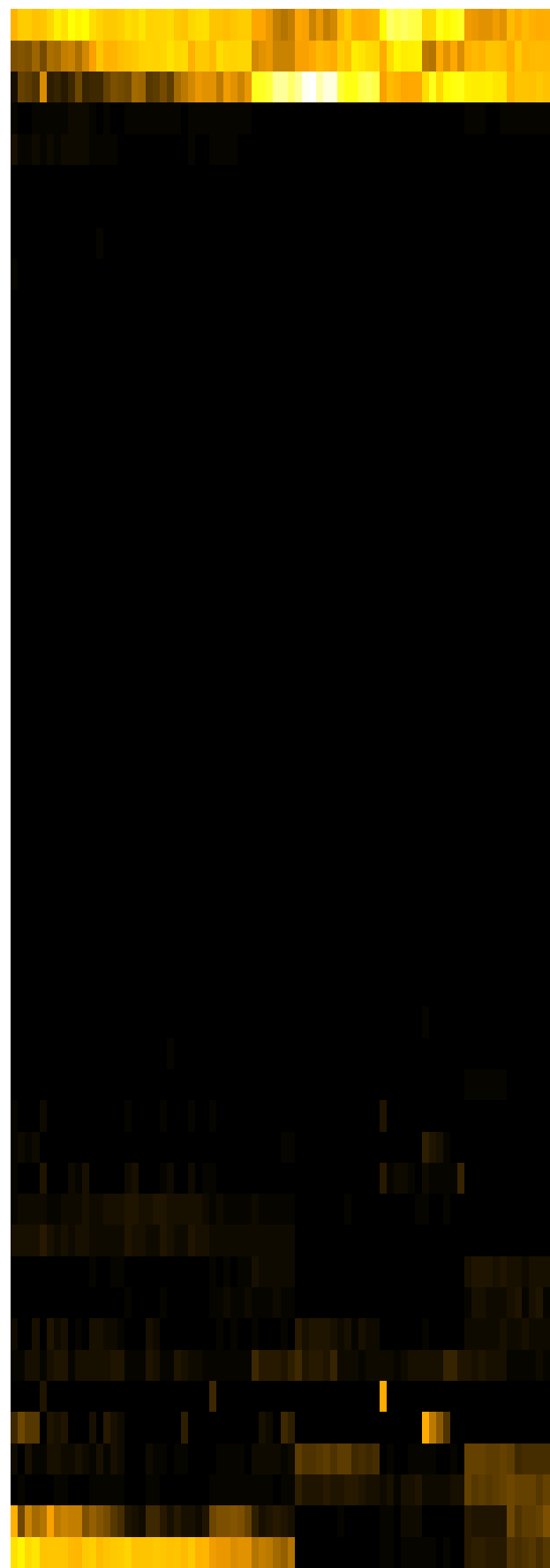
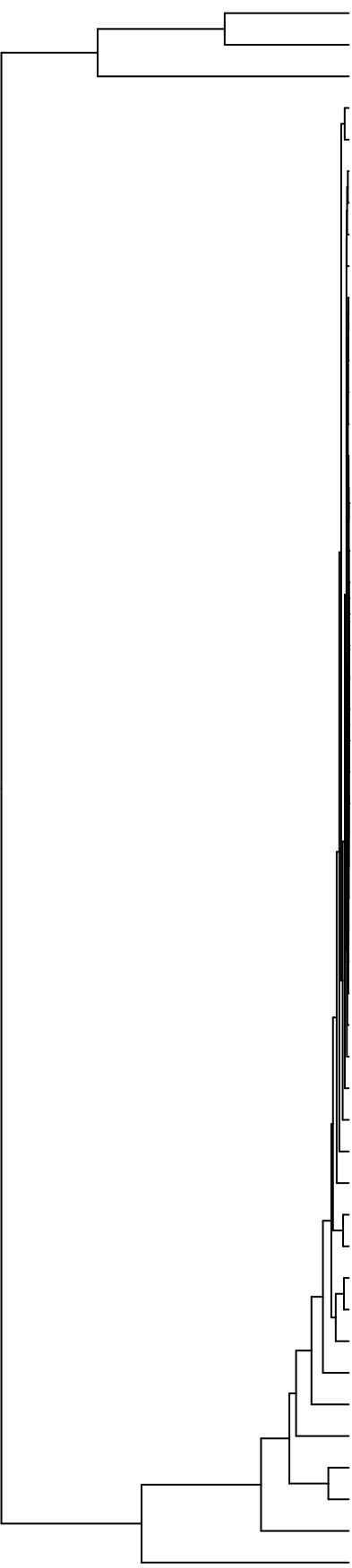


Group005
 Baseline
 Final F -PMA



- Veillonella
- Haemophilus
- Neisseria
- Schaalia
- Leptotrichia
- Solobacterium
- Saccharibacteria_(TM7)_[G-1]
- Stomatobaculum
- Catonella
- Lancefieldella
- Abconditabacteria_(SR1)_[G-1]
- Oribacterium
- Lachnoanaerobaculum
- Actinomyces
- Capnocytophaga
- Novosphingobium
- Acinetobacter
- Mycolicibacterium
- Lachnospiraceae_[G-2]
- Acidovorax
- Serratia
- Leifsonia
- Sphingobium
- Microbacterium
- Siccationidurans
- Agrobacterium
- Cutibacterium
- Phyllobacterium
- Riemerella
- Saccharibacteria_(TM7)_[G-6]
- Staphylococcus
- Delftia
- Lautropia
- Pseudomonas
- Alloprevotella
- Raoultella
- Salmonella
- Klebsiella
- Eikenella
- Granulicatella
- Gemella
- Rothia
- Prevotella
- Aggregatibacter
- Enterobacter
- Citrobacter
- Campylobacter
- Porphyromonas
- Fusobacterium
- Streptococcus

- F-28914_S40
- F-28914_S437
- F-28914_S493
- F-28914_S438
- F-28914_S596
- F-28914_S595
- F-28914_S116
- F-28914_S114
- F-28914_S275
- F-28914_S119
- F-28914_S273
- F-28914_S117
- F-28914_S279
- F-28914_S053
- F-28914_S054
- F-28914_S051
- F-28914_S029
- F-28914_S026
- F-28914_S027
- F-28914_S047
- F-28914_S046
- F-28914_S048
- F-28914_S070
- F-28914_S072
- F-28914_S071
- F-28914_S066
- F-28914_S060
- F-28914_S059
- F-28914_S033
- F-28914_S036
- F-28914_S035
- F-28914_S041
- F-28914_S040
- F-28914_S061
- F-28914_S063
- F-28914_S065

Genus

Samples